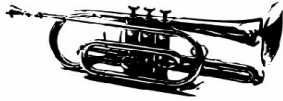


# NEW HOLLAND

## Area Historical Society

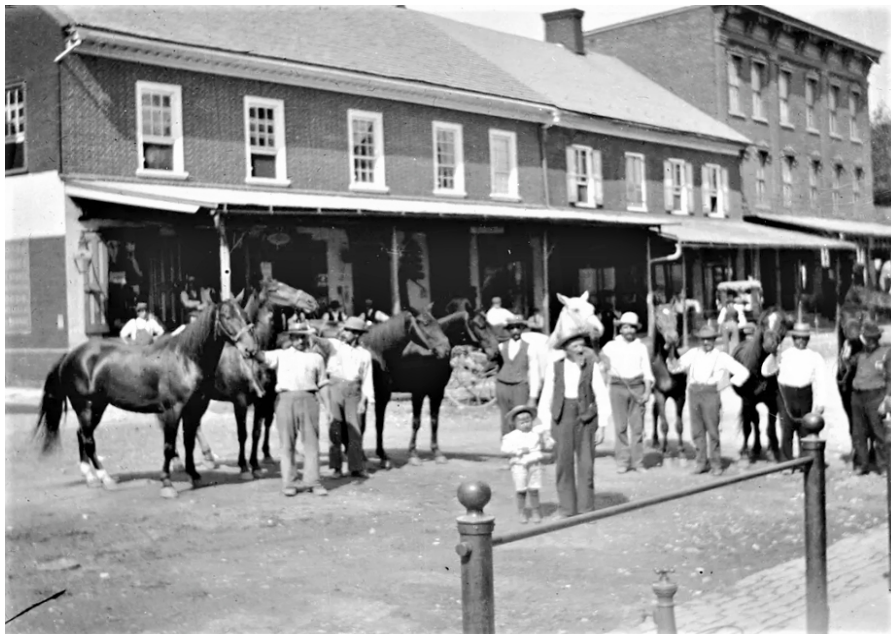


Volume 17 Issue 2

Spring 2021

### Preserving New Holland Capital Campaign Big step for the Museum

Submitted by Larry Shirk



As many of you know, the New Holland Area Historical Society Museum has been a part of the borough since 2005. The building that houses it dates back to the 1780's. There was a general store in the building continuously from the 1700's until 2005 and a hardware store since the early years. The western portion of the building was a tavern and hotel until 1856, followed by a drug store from 1856 to 1913. There were several other businesses that occupied parts of the building over the years. Most of us knew it as the Kauffman's Hardware Building until it took its current form.

The building has a rich history including these interesting facts:

- The second floor on the west side served as the town hall during the last half of the 19th century. The fire company was organized in the old town hall.
- Representative Anthony E. Roberts (October 29, 1803 – January 23, 1885), was an American politician, member of the [United States House of Representatives](#) from 1855 to 1859, an [abolitionist](#) and close associate of [Thaddeus Stevens](#). He got his start working in

#### OFFICERS 2021

**President**  
Steve Loewen

**Vice President**  
Mitch Dissinger

**Secretary**  
Susen Leary

**Recording Secretary**  
Jan Haas

**Treasurer**  
Bill Gable

**Newsletter**  
Steve Loewen

**MISSION STATEMENT**  
*The mission of the New Holland Area Historical Society is to collect, organize, and preserve information and historical materials that give insight to understanding the life and times of the New Holland area and to share these findings with others through Museum exhibits, lectures, and educational outreach programs.*

- this building and eventually owned it.
- There has been no renovation on the attic since the building was constructed.
- Some have claimed that the building is haunted.

Currently, the museum provides space to store and display artifacts, historical data, photos, literature and other memorabilia which are available for education and research opportunities. The collection contains extensive materials from The New Holland Machine Company and Victor F. Weaver, Inc, as well as paintings by local artist Myrtle Trembly and many other local historically significant items. One of the key responsibilities of the New Holland Area Historical Society is to provide a safe and functional place to house the artifacts well into the future. The Historical Society has recently been presented with a significant opportunity to address this responsibility through the purchase of the Kauffman building. It is a considerable but necessary undertaking. Therefore, we are announcing The Preserving New Holland Capital Campaign to generate enough funds to purchase the building, pay off the mortgage and do some much needed repairs to the external brickwork of the building. Our goal is to raise \$250,000 and due to 100% support from our Trustees and the generosity of other donors, we have achieved almost 70% of our goal.

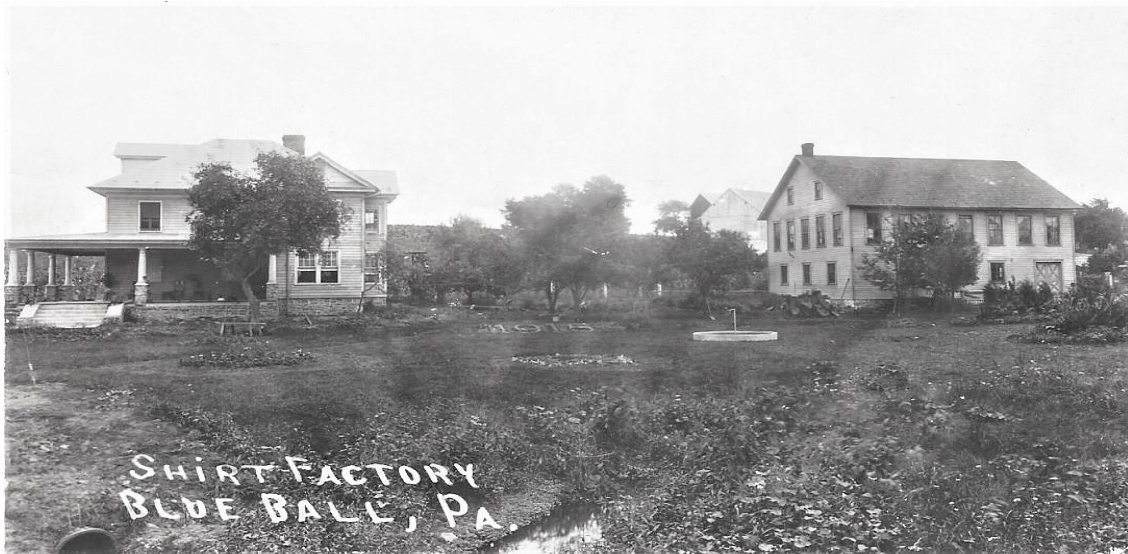
**Now we need your help!** Please send your donations, payable to “NHAHS,” for the Preserving New Holland Capital Campaign to: NHAHS PO Box 464 New Holland, PA 17557

(The New Holland Area Historical Society is currently registered as a 501(c)(3) charitable organization in Pennsylvania. Donations are tax deductible.)

The Preserving New Holland Capital Campaign will ultimately allow the Historical Society to focus more time and energy on providing a significant resource for the New Holland area as well as achieving the preservation of a valued historical landmark. Your donation can help us reach that goal. **Thank you for all of your support of the New Holland Area Historical Society.**

### **New Holland Area Historical Society Website**

Did you ever access the NHAHS website at <https://NhHistorical.com/> ? There have been great improvements made in it since Bill Gable applied his special skills. One of the sections of the website displays unidentified photos that the Society is seeking to identify. Charles Stern was able to identify two! The two newly identified photos are shown below.



Shown is the Blue Ball shirt factory in 1915. It was located a short distance east of the square in Blue Ball on Route 23. The buildings still stand, and have an address of 1130 Main Street, East Earl.



Looking east towards the intersection of Oak Avenue and Conestoga Street circa the 1960's, before Ashlea Village was developed.

## A CHEVRON DOOR

Submitted by Lou Ann C. Miller

Sometimes the most exciting historical finds happen when least expected. Garden Spot Village resident and friend of the New Holland Historical Society Museum, Lloyd Zeigler, could hardly contain his excitement while exploring the barn on the Old Wallace Plantation. The Plantation also known as the Zimmerman Farm, located at 4452 Division Highway, is noted for its sturdy and beautiful stone farmhouse built around 1750. But tucked away in the old barn was an historical gem. A replacement door for a granary entry door was what looked to be an authentic chevron house door, with it's original hinges. A quick picture was sent to Greg Huber, author of [The Historic Barns of Southeastern Pennsylvania: Architecture and Preservation, Built 1750 – 1900,](#) who confirmed Lloyd's belief that the door was of architectural significance. Not only was the door chevron paneled, but the design was a diamond chevron, not the typical arrowhead chevron. The slats on the bottom half of the door point upward with a diamond forming in the center of the door. The survival of this style of door into the 21<sup>st</sup> century is rare.

One similar chevron door is at Fort Zeller, Lebanon County, build in the mid-1740s. Other examples are the 1750s Keim homestead in Oley Valley and the exterior doors at the Moravian Gemeinhaus built in 1741 and 1743 in Bethlehem, Northampton County. In New Hope off Route 202 is a little known 1770 house with a chevron door.



The Hans Herr House, oldest surviving house in Lancaster County, was built in 1719 in a Germanic medieval style. This style of housing worked in their former homeland, so it made sense to the immigrants to bring their building style with them. The Hans Herr house has an arrowhead chevron door.

Chevron doors were prominent in many types of medieval buildings. An example of a Chevron door in the Rhine Palatinate, modern Germany, where many immigrants originated is at Schloss Wallhausen. (Wallhausen Castle)

The Chevron door, now donated to the Historical Society, has been placed in its' new home, the first floor hallway of the Historical Society Museum. Surrounding the door are items that would have been outside a farm door in the 1700s: a bucket bench, a lantern, market basket of apples and a boot scraper.

Another piece of unique local history is preserved at the New Holland Area Historical Society Museum

## Early Memorial Day Celebrations in New Holland

Submitted by Brian Frankhouser

Unlike our neighbors to the east in Churchtown, New Holland had very little fanfare during the early years when Memorial Day was first celebrated. The first recognition of this special day in Pennsylvania occurred in Boalsburg in 1864 when graves of two fallen heroes of the Civil War were decorated with flowers. The patriotic practice caught on quickly, and in 1874 the state declared Decoration Day a legal holiday. Eventually, in 1888, the recently organized New Holland Knights of the Golden Eagle sponsored a local parade and ceremony fitting of the occasion. It was announced in the May 28, 1892 edition of the New Holland Clarion that Decoration Day would officially be called "Memorial Day", but the old name survived for many years. Small parades continued in New Holland during the 1890's and early 1900's, but were mostly composed of the local secret societies, a band or two, and our respected veterans. There was always a special ceremony in the cemetery following the parade. The celebration of Memorial Day in New Holland was turned up a notch in 1908. The parade

that year included an “industrial division” in addition to the civic, patriotic, and fraternal classes. This new category invited all the businesses in town to enter a float. Many did. It was reported by some of the town’s oldest citizens to be the largest and best parade ever held in New Holland. Unfortunately, the weather did not cooperate, and it prevented some of the parade entries and many spectators from attending. However, the committee was encouraged enough to declare an even “greater time next year”.

The Memorial Day events in 1909 topped those of 1908. The trolley service ran every half hour, all the stables were full, and not a parking space was left unused. Thousands of spectators descended on New Holland. The crowds watched the local baseball team suffer a shutout in the morning, but shortly after 1:00 the afternoon parade started. It was formed at Franklin Street and Brimmer Avenue, and then moved up to Main Street. On Main Street, the parade traveled east to Kinzer Avenue, then made a U-turn and proceeded across town to Brubaker Avenue. From Brubaker Avenue, they counter marched on Main Street and returned to Luther Avenue (North Railroad Avenue) and entered the cemeteries. After the graves were decorated and the invocation was given, Lancaster lawyer, F. S. Groff, was introduced as the featured speaker. Everyone in attendance heard his speech (without a microphone and sound system) and were captivated by it. The Clarion reported that “Monday, May 31, will go down in history as one of the greatest days in New Holland to date”.



Photo of I. G. Davis Sons Memorial Day parade float in front of their business at 145 East Main Street. Oliver and James Davis conducted their tinsmith shop at the same location as their grandfather, Samuel Davis, who first opened it here in 1826. The photograph was probably taken in 1908, two years after J. H. Townsley completely renovated the storefront for the business.



Photo shows the New Holland Clarion crew ready to participate in the 1909 Memorial Day parade. They are also parked in front of the I. G. Davis Sons tinsmith shop and the William M. Stauffer residence (now the drug store). The matching horses pulling the wagon were owned by William H. Good.



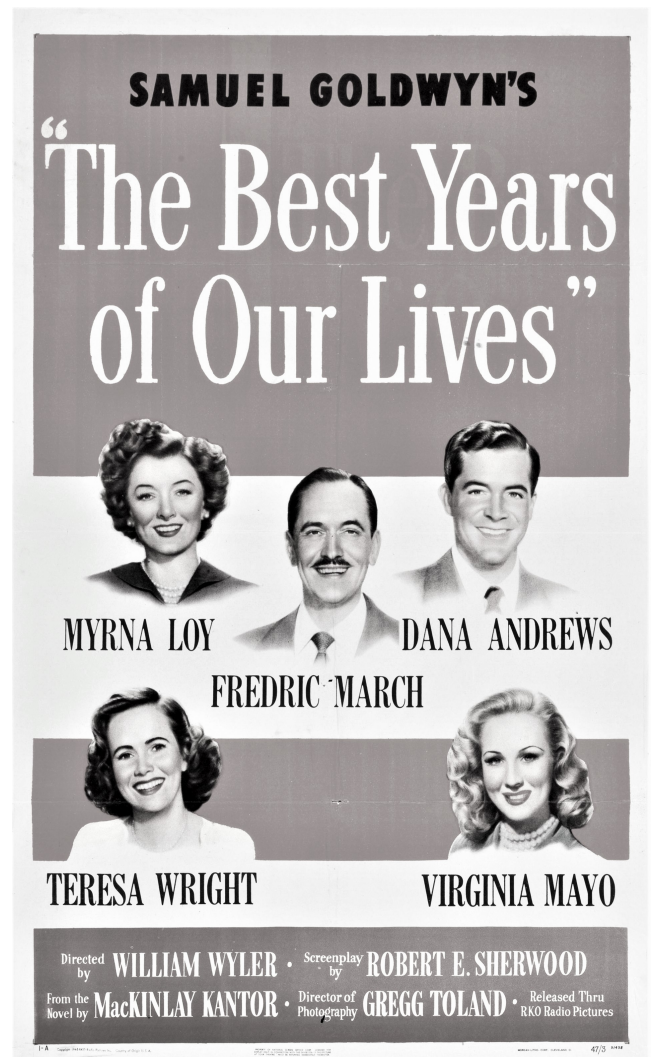
The Sunflower Club had two floats in the 1909 Memorial Day parade. Shown is the “trophies of the chase” as it is entering the church grounds for the closing ceremonies. The Sunflower Club was the most prominent local hunting club that sponsored and attended fox chases. Their kennels were located on Charles A. Eaby’s farm, two miles south of New Holland at Mt. Tabor.



Remember this photo in the January 1, 2021 newsletter?

The man in the dark suit in the middle is Harold Russell who had a starring role in the "Best Years of Our Lives" Movie. Mr. Russell visited New Holland in March 1950 as the national commander for the AMVETS. He visited the newly renovated Hall that is now our Museum on the second floor.

The movie earned seven Academy Awards including best picture and Harold Russell received an Oscar for best supporting actor. New Holland hosted a bona fide celebrity in town that day!



**A huge thank you to the following donors listed below!**

**NHAHS BUSINESS PARTNERS ALLIANCE**

HERITAGE PARTNER **CASE NEW HOLLAND – M & T Bank – Garden Spot Village**

**Ranck Family Heritage Society – New Holland American Legion Post 662**

**George & Nancy Weaver – Geoff & Cathy Class**

**John and Sharon Sheaffer – Chester County Solid Waste Authority**

BUSINESS PARTNER **Goodville Mutual Casualty Company, Good's Store Inc**

BENEFACTORS **Gene & Mary Lowry, Charles & Jane Zimmerman**

**New Holland Lions Club, New Holland Kiwanis Club, Don Horning, Elizabeth Hahn**

**Ray Bair, Wilbur & Bert Horning and Steve Loewen**

**If you would like to become a Partner, please contact one of the Trustees. Thanks**

---

**NEW HOLLAND AREA HISTORICAL MEMBERSHIP APPLICATION**

Type of membership requested (please check one)

\_\_\_\_\_ Lifetime Membership (\$500)                      \_\_\_\_\_ Annual Corporate Membership (\$100)

\_\_\_\_\_ Annual Individual/Household Membership (\$20)                      \$\_\_\_\_\_ Other Gift

First Name: \_\_\_\_\_ Last Name: \_\_\_\_\_

Address: \_\_\_\_\_

Zip Code: \_\_\_\_\_ Phone: (    ) \_\_\_\_\_ E-mail: \_\_\_\_\_

Please make check payable to NHAHS and mail with this application to:  
**New Holland Area Historical Society PO Box 464 New Holland PA 17557**

# NEW HOLLAND

Area Historical Society



PO Box 464 New Holland PA 17557

[www.NhHistorical.com](http://www.NhHistorical.com)

"Open Thursdays in March and tentatively beyond pending virus numbers".

## **Historical Society meetings 2021**

*Due to the virus we do not have any presentations at Garden Spot Village Chapel planned for 2021.*